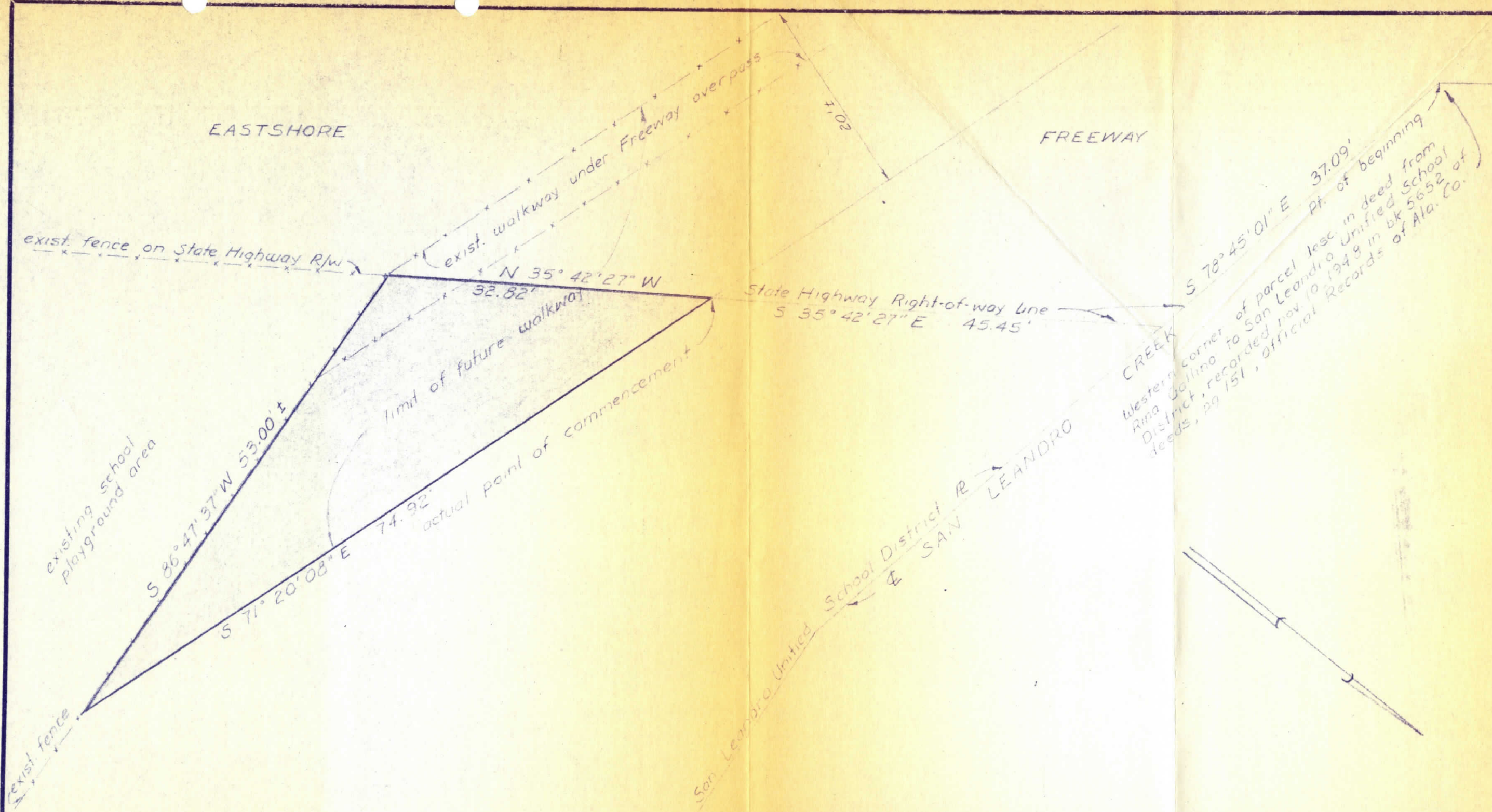



308E



 The portion of the Grover Cleveland School Walkway within the limits of the San Leandro School District Property is indicated thus.

NO.	REVISED	BY	APVD
COMPILED	TR	DRAWN	TR
CHECKED	J.G.B.		
APPROVED			
DATE	3-8-56	SCALE	

CITY OF SAN LEANDRO
CALIFORNIA
ENGINEERING DEPARTMENT

PORTION OF PROPOSED
WALKWAY ON SCHOOL
PROPERTY

SHEET	1	OF	1
APPROVED BY	RICHARD F. LOVEJOY CITY ENGINEER		
DATE	REG. C. E. NO. 6686		
DWG.	27	CASE	50

JOB NO. 4 145 1704 3